

# EXHIBIT C

# 1530 FIRST ST. APARTMENTS

1530 FIRST STREET SW, WASHINGTON DC 20024

10/25/2018

ZC# 18-13



Sheet #	Sheet Name
A-01	COVER
A-02	VICINITY MAP
A-03	COMPREHENSIVE PLAN
A-04	ZONING BOUNDARY MAP
A-05	AERIAL VIEW
A-06	BUZZARD POINT FRAMEWORK
A-07	ENLARGED SITE PLAN - FIRST LEVEL
A-08	ENLARGED SITE PLAN - THIRD LEVEL
A-09	VEHICULAR CIRCULATION
A-10	CONTEXT PICTURES
A-11	CONTEXT PICTURES
A-12	PERSPECTIVE VIEW
A-13	PERSPECTIVE VIEW
A-14	PERSPECTIVE VIEW
A-15	PERSPECTIVE VIEW
A-16	PERSPECTIVE VIEW
A-17	PERSPECTIVE VIEW
A-18	PERSPECTIVE VIEW
A-19	FIRST FLOOR PLAN
A-20	SECOND FLOOR PLAN
A-21	THIRD FLOOR PLAN
A-22	FOURTH - NINTH FLOOR PLAN
A-23	TENTH FLOOR PLAN
A-24	PENTHOUSE FLOOR PLAN
A-25	ROOF FLOOR PLAN
A-26	GARAGE FLOOR PLAN
A-27	WEST RENDERED ELEVATION
A-28	NORTH RENDERED ELEVATION
A-29	EAST RENDERED ELEVATION
A-30	SOUTH RENDERED ELEVATION
A-31	WEST ELEVATION
A-32	NORTH ELEVATION
A-33	EAST ELEVATION
A-34	SOUTH ELEVATION
A-35	BUILDING SECTION
A-36	BUILDING SECTION
A-37	ENLARGED PENTHOUSE ELEVATION
A-38	ENLARGED PENTHOUSE ELEVATION
A-39	ENLARGED COURTYARD SECTION
A-40	ENLARGED COURTYARD SECTION
A-41	BAY CALCULATION
A-42	STREETSCAPE EXPERIENCE - FIRST ST.
A-43	STREETSCAPE EXPERIENCE - RETAIL
A-44	ENLARGED GARAGE RAMP
A-45	LOADING DOCK TURNING DIAGRAM
A-46	MATERIAL DETAILS
A-47	MATERIAL DETAILS
A-50	ZONING INFORMATION AND UNIT MATRIX
A-51	LEED CHECKLIST
A-52	INCLUSIONARY ZONING ANALYSIS

1530 FIRST ST. S.W.

1530 FIRST ST. S.W. WASHINGTON DC 20024

Square: 0656 Lot No: 0053 Zone: CG-4



PGN ARCHITECTS, PLLC  
210 7th Street SE - Suite 201  
Washington, DC 20003  
202.822.5995 (P); 202.822.0908 (F)



TM ASSOCIATES INC.  
1375 Piccard Drive, Suite 150  
Rockville, Maryland 20850  
240.683.0300 (P); 240.428.7636 (F)

COVER | A-01

10/25/2018



1530 FIRST ST. S.W.

VICINITY MAP A-02

1530 FIRST ST. S.W. WASHINGTON DC 20024

Square: 0656 Lot No: 0053 Zone: CG-4



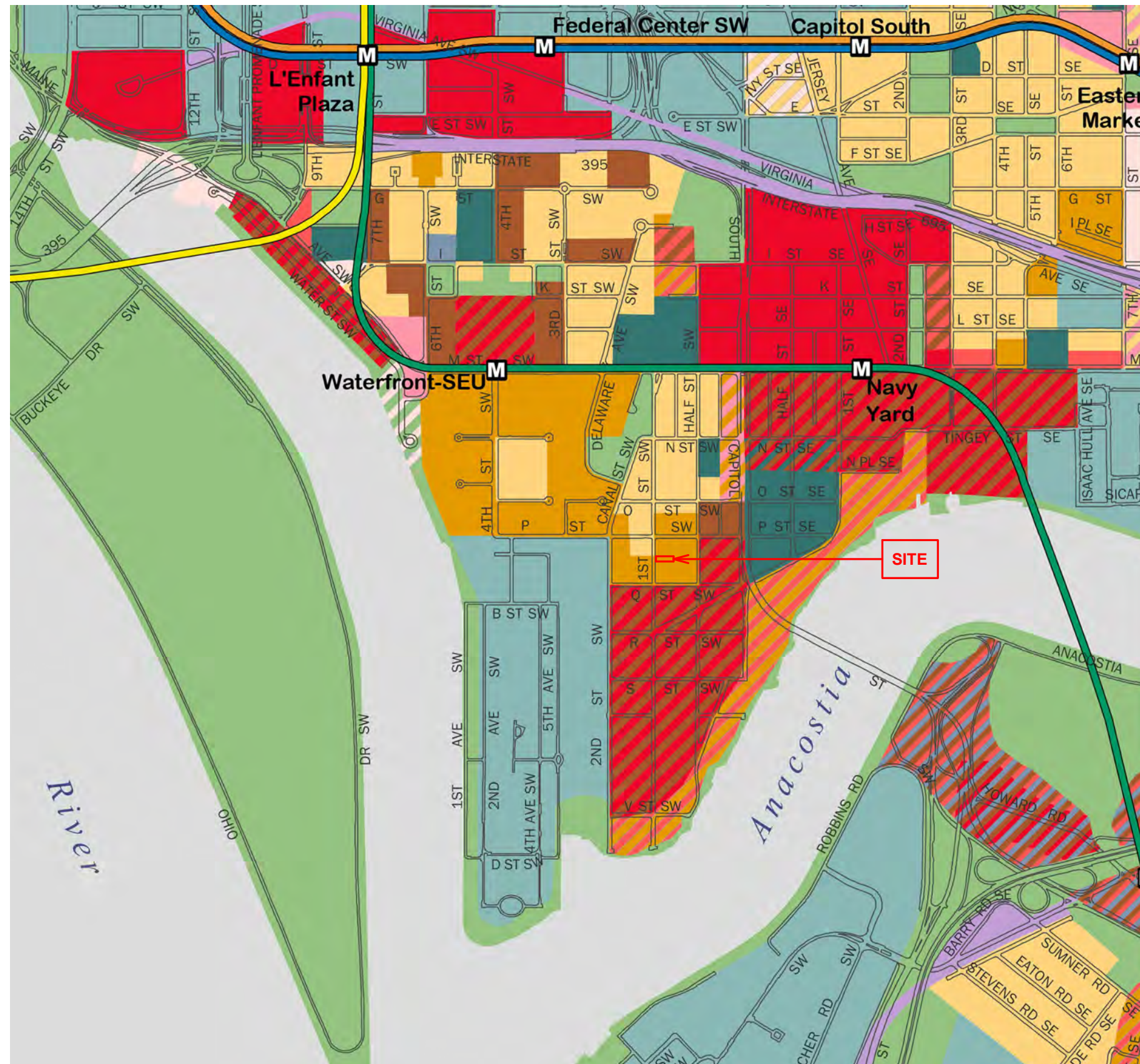
PGN ARCHITECTS, PLLC  
210 7th Street SE - Suite 201  
Washington, DC 20003  
202.822.5995 (P); 202.822.0908 (F)



TM ASSOCIATES INC.  
1375 Piccard Drive, Suite 150  
Rockville, Maryland 20850  
240.683.0300 (P); 240.428.7636 (F)

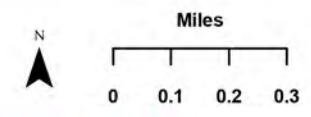
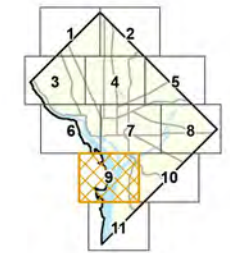


10/25/2018



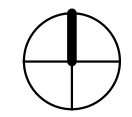
**Comprehensive Plan  
Future Land Use  
Map 9**

- Low Density Residential
- Moderate Density Residential
- Medium Density Residential
- High Density Residential
- Low Density Commercial
- Moderate Density Commercial
- Medium Density Commercial
- High Density Commercial
- Production, Distribution, and Repair
- Federal
- Local Public Facilities
- Institutional
- Parks, Recreation, and Open Space
- Mixed Land Use
- WATER



Government of the District of Columbia  
Office of Planning ~ January 2013

This map was created for planning purposes from a variety of sources. It is neither a survey nor a legal document. Information provided by other agencies should be verified with them where appropriate.



1530 FIRST ST. S.W.

1530 FIRST ST. S.W. WASHINGTON DC 20024

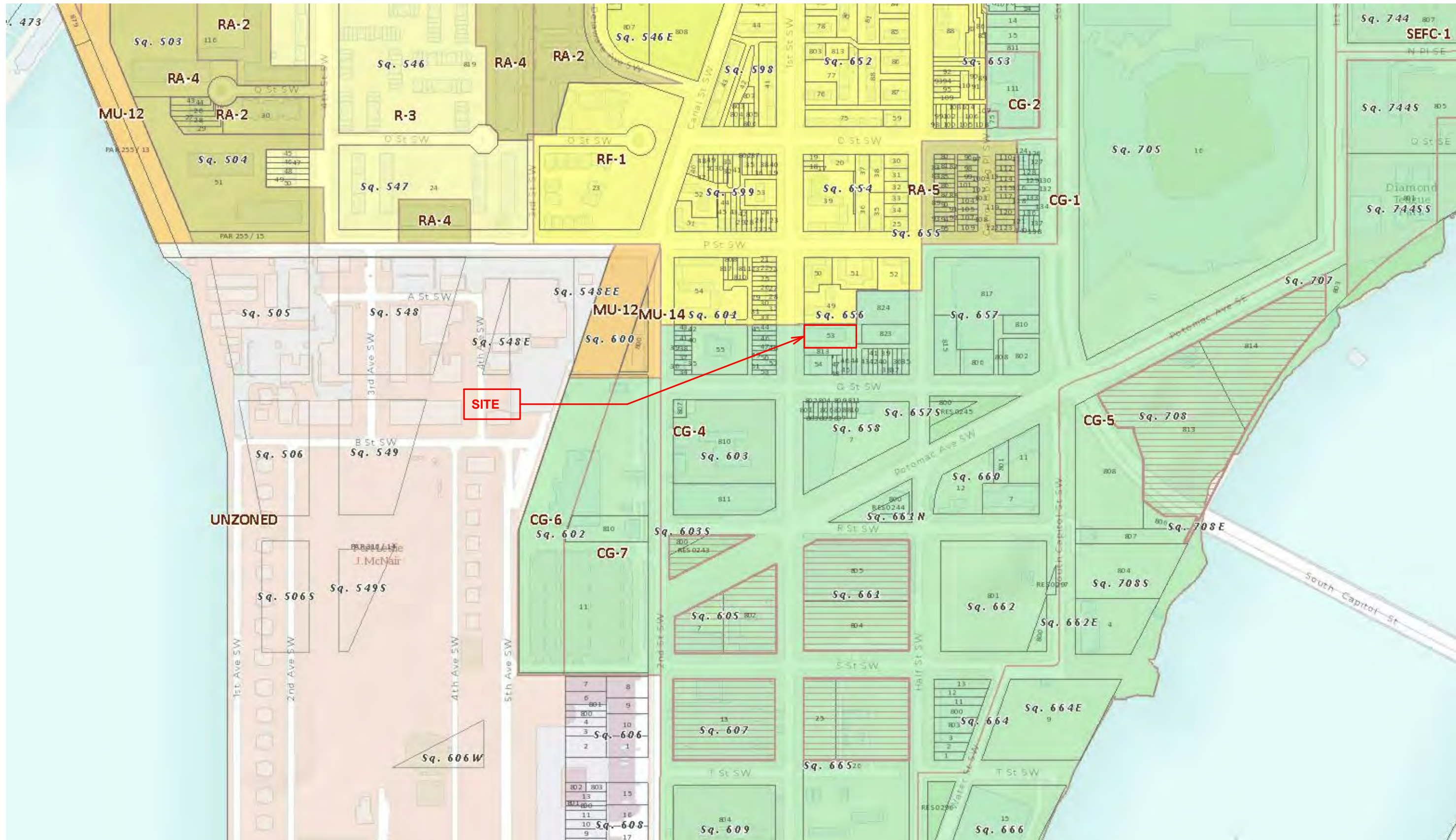
Square: 0656 Lot No: 0053 Zone: CG-4



PGN ARCHITECTS, PLLC  
210 7th Street SE - Suite 201  
Washington, DC 20003  
202.822.5995 (P); 202.822.0908 (F)



TM ASSOCIATES INC.  
1375 Piccard Drive, Suite 150  
Rockville, Maryland 20850  
240.683.0300 (P); 240.428.7636 (F)



1530 FIRST ST. S.W.

ZONING BOUNDARY MAP | A-04

1530 FIRST ST. S.W. WASHINGTON DC 20024

Square: 0656 Lot No: 0053 Zone: CG-4

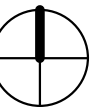
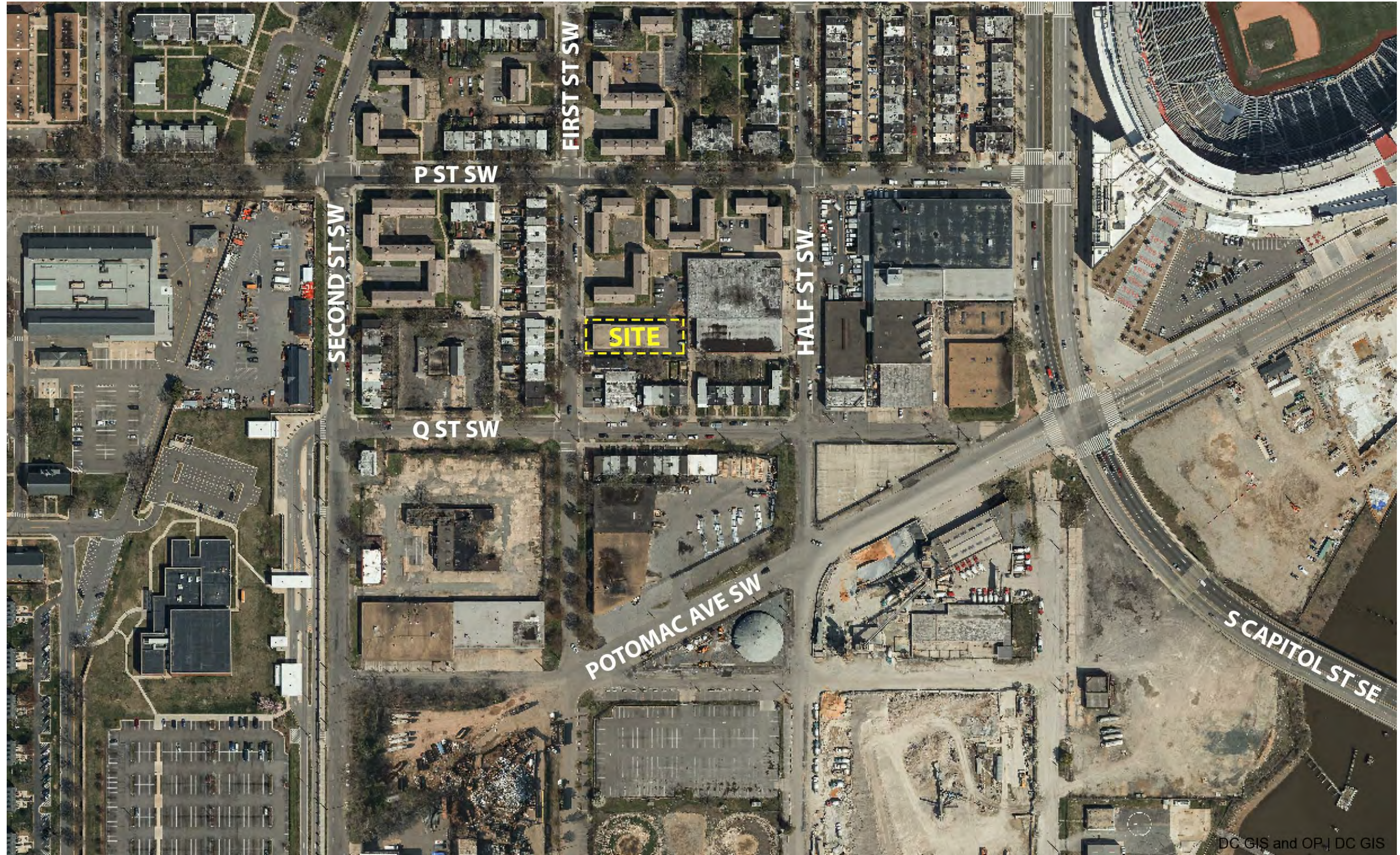


PGN ARCHITECTS, PLLC  
210 7th Street SE - Suite 201  
Washington, DC 20003  
202.822.5995 (P); 202.822.0908 (F)



TM ASSOCIATES INC.  
1375 Piccard Drive, Suite 150  
Rockville, Maryland 20850  
240.683.0300 (P); 240.428.7636 (F)

10/25/2018



1530 FIRST ST. S.W.

AERIAL VIEW | A-05

1530 FIRST ST. S.W. WASHINGTON DC 20024

Square: 0656 Lot No: 0053 Zone: CG-4



PGN ARCHITECTS, PLLC  
210 7th Street SE - Suite 201  
Washington, DC 20003  
202.822.5995 (P); 202.822.0908 (F)



TM ASSOCIATES INC.  
1375 Piccard Drive, Suite 150  
Rockville, Maryland 20850  
240.683.0300 (P); 240.428.7636 (F)

10/25/2018



2 ENLARGED AREA PLAN  
SCALE: N.T.S.

### The Goal

Several new projects are planned for the Buzzard Point area to catalyze its long-awaited economic revitalization and overcome its isolated, industrial character. The new public investments include the \$600 million Phase 1 replacement of the South Capitol Street Bridge across the Anacostia River and the proposed \$300 million DC United Soccer Stadium.

The physical improvements associated with the new South Capitol Street bridge and soccer stadium will transform the public realm and accelerate the redevelopment of Buzzard Point. To ensure that the revitalization is consistent with the aspirations and needs of nearby residents, the District government is preparing an Urban Design Framework Plan for the Buzzard Point area. The Buzzard Point plan will inform and guide public and private development decisions for the next ten years. The purpose of the Buzzard Point Framework Plan is to:

- Develop a framework for Buzzard Point to inform future redevelopment in the context of **public realm** improvements and amenities that establish a mixed-use, highly walkable neighborhood that is oriented to an enhanced waterfront
- Promote affordable housing advancements, and economic gains that benefit the **community**
- Identify sustainability targets and environmental remediation practices for future redevelopment and the **environment**
- Incorporate planned **transportation** improvements for vehicles, transit, bicyclists, and pedestrians
- Categorize short-, medium-, and long-term phasing for new infrastructure

3 BUZZARD POINT URBAN DESIGN FRAMEWORK GOALS  
SCALE: N.T.S.

1 BUZZARD POINT URBAN DESIGN FRAMEWORK  
SCALE: N.T.S.

PROJECT STUDY AREA LEGEND	
<span style="display:inline-block; width:15px; height:15px; background-color: #e91e63; border: 1px solid black;"></span>	MIXED-USE DEVELOPMENT
<span style="display:inline-block; width:15px; height:15px; background-color: #ff7043; border: 1px solid black;"></span>	MULTI-FAMILY RESIDENTIAL
<span style="display:inline-block; width:15px; height:15px; background-color: #42a5f5; border: 1px solid black;"></span>	PUBLIC/INSTITUTIONAL
<span style="display:inline-block; width:15px; height:15px; background-color: #a1887f; border: 1px solid black;"></span>	UTILITIES/INFRASTRUCTURE



4 FREDERICK DOUGLASS MEMORIAL BRIDGE  
SCALE: N.T.S.



5 AUDI FIELD  
SCALE: N.T.S.



5 NATIONALS PARK  
SCALE: N.T.S.



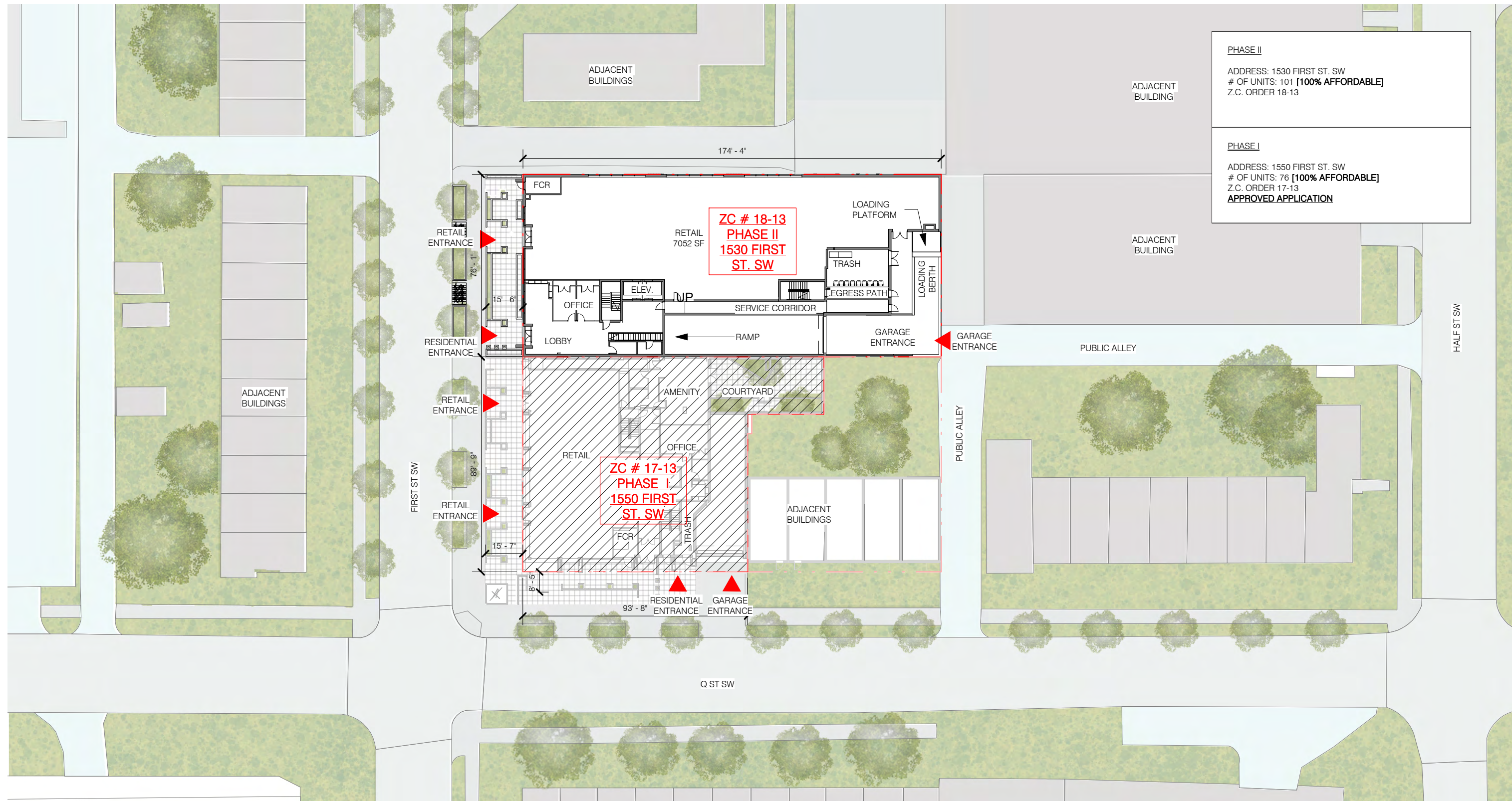
6 PEPCO SUBSTATION  
SCALE: N.T.S.

1530 FIRST ST. S.W.

1530 FIRST ST. S.W. WASHINGTON DC 20024

Square: 0656 Lot No: 0053 Zone: CG-4

**PGN** ARCHITECTS  
PGN ARCHITECTS, PLLC  
210 7th Street SE - Suite 201  
Washington, DC 20003  
202.822.5995 (P); 202.822.0908 (F)



**PHASE II**  
 ADDRESS: 1530 FIRST ST. SW  
 # OF UNITS: 101 [100% AFFORDABLE]  
 Z.C. ORDER 18-13

**PHASE I**  
 ADDRESS: 1550 FIRST ST. SW  
 # OF UNITS: 76 [100% AFFORDABLE]  
 Z.C. ORDER 17-13  
**APPROVED APPLICATION**

**ZC # 18-13  
 PHASE II  
 1530 FIRST  
 ST. SW**

**ZC # 17-13  
 PHASE I  
 1550 FIRST  
 ST. SW**



**1530 FIRST ST. S.W.**

**ENLARGED SITE PLAN - FIRST LEVEL | A-07**

1530 FIRST ST. S.W. WASHINGTON DC 20024  
 Square: 0656 Lot No: 0053 Zone: CG-4

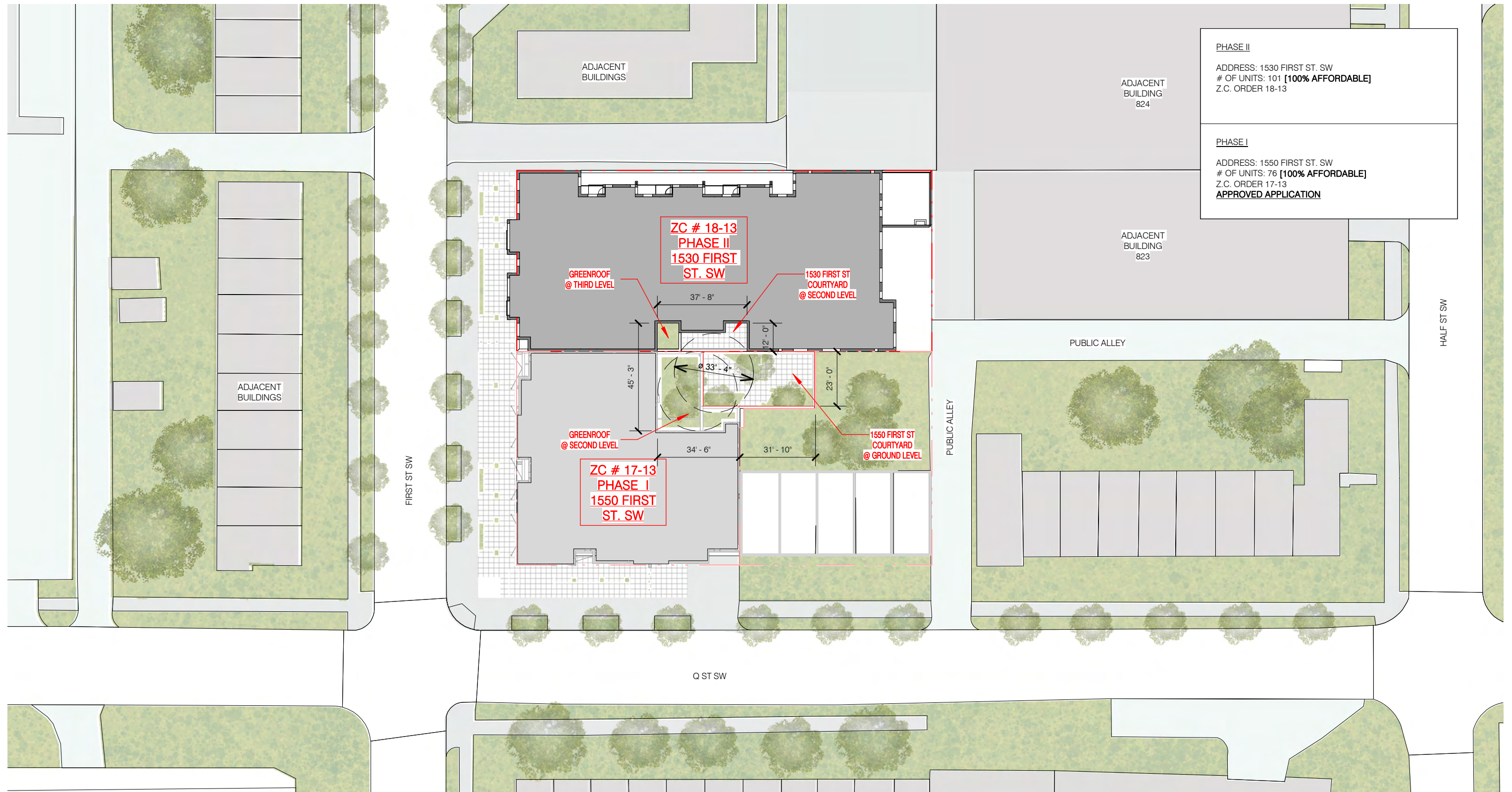
**PGN ARCHITECTS**  
 PGN ARCHITECTS, PLLC  
 210 7th Street SE - Suite 201  
 Washington, DC 20003  
 202.822.5995 (P); 202.822.0908 (F)

**TM Associates Inc.**

TM ASSOCIATES INC.  
 1375 Piccard Drive, Suite 150  
 Rockville, Maryland 20850  
 240.683.0300 (P); 240.428.7636 (F)

10/25/2018





**PHASE II**  
 ADDRESS: 1530 FIRST ST. SW  
 # OF UNITS: 101 [100% AFFORDABLE]  
 Z.C. ORDER 18-13

**PHASE I**  
 ADDRESS: 1550 FIRST ST. SW  
 # OF UNITS: 76 [100% AFFORDABLE]  
 Z.C. ORDER 17-13  
**APPROVED APPLICATION**



**1530 FIRST ST. S.W.**

ENLARGED SITE PLAN - THIRD LEVEL | A-08

1530 FIRST ST. S.W. WASHINGTON DC 20024

Square: 0656 Lot No: 0053 Zone: CG-4

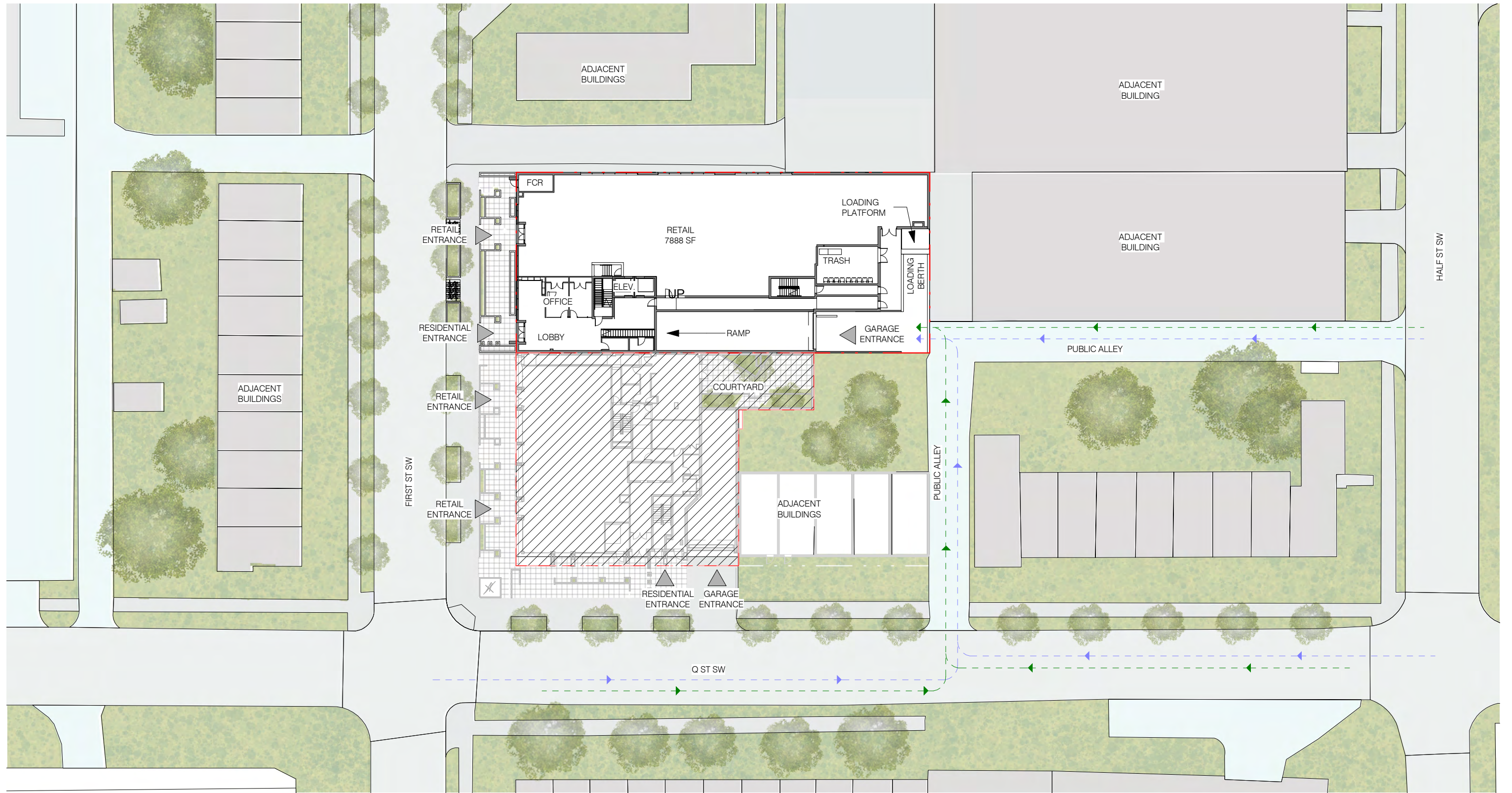


PGN ARCHITECTS, PLLC  
 210 7th Street SE - Suite 201  
 Washington, DC 20003  
 202.822.5995 (P); 202.822.0908 (F)



TM ASSOCIATES INC.  
 1375 Piccard Drive, Suite 150  
 Rockville, Maryland 20850  
 240.683.0300 (P); 240.428.7636 (F)

10/25/2018



VEHICULAR ENTRY/EXIT   
 LOADING ENTRY/EXIT

## 1530 FIRST ST. S.W.

VEHICULAR CIRCULATION | A-09

1530 FIRST ST. S.W. WASHINGTON DC 20024

Square: 0656 Lot No: 0053 Zone: CG-4



PGN ARCHITECTS, PLLC  
 210 7th Street SE - Suite 201  
 Washington, DC 20003  
 202.822.5995 (P); 202.822.0908 (F)



TM ASSOCIATES INC.  
 1375 Piccard Drive, Suite 150  
 Rockville, Maryland 20850  
 240.683.0300 (P); 240.428.7636 (F)

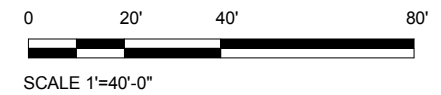
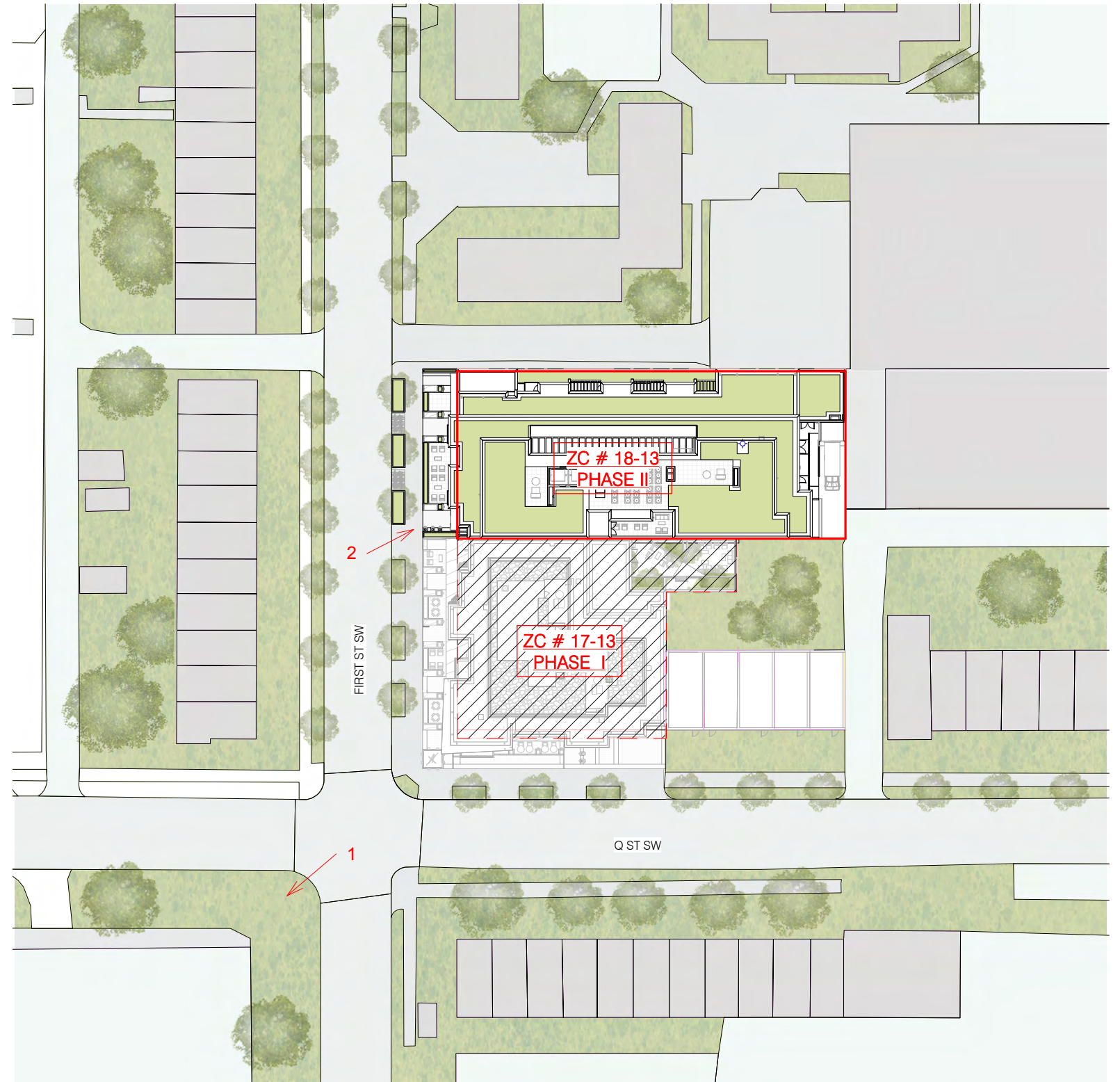
10/25/2018



1



2



1530 FIRST ST. S.W.

1530 FIRST ST. S.W. WASHINGTON DC 20024

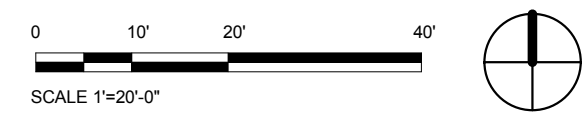
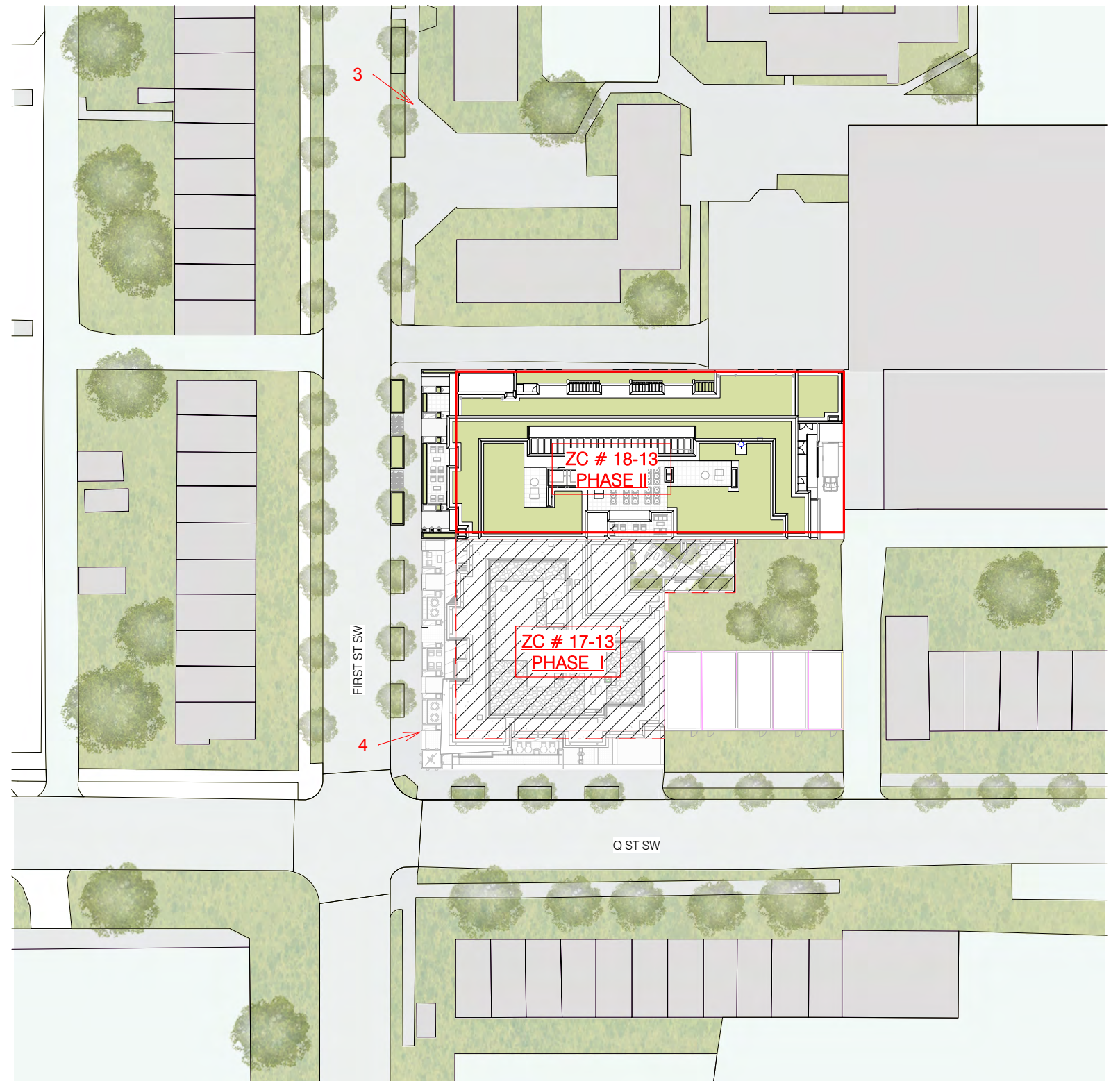
Square: 0656 Lot No: 0053 Zone: CG-4



PGN ARCHITECTS, PLLC  
210 7th Street SE - Suite 201  
Washington, DC 20003  
202.822.5995 (P); 202.822.0908 (F)



TM ASSOCIATES INC.  
1375 Piccard Drive, Suite 150  
Rockville, Maryland 20850  
240.683.0300 (P); 240.428.7636 (F)



1530 FIRST ST. S.W.

1530 FIRST ST. S.W. WASHINGTON DC 20024

Square: 0656 Lot No: 0053 Zone: CG-4

**PGN** ARCHITECTS  
 PGN ARCHITECTS, PLLC  
 210 7th Street SE - Suite 201  
 Washington, DC 20003  
 202.822.5995 (P); 202.822.0908 (F)

**TM Associates Inc.**

TM ASSOCIATES INC.  
 1375 Piccard Drive, Suite 150  
 Rockville, Maryland 20850  
 240.683.0300 (P); 240.428.7636 (F)



1530 FIRST ST. S.W.

PERSPECTIVE VIEW | A-12

1530 FIRST ST. S.W. WASHINGTON DC 20024

Square: 0656 Lot No: 0053 Zone: CG-4



PGN ARCHITECTS, PLLC  
210 7th Street SE - Suite 201  
Washington, DC 20003  
202.822.5995 (P); 202.822.0908 (F)



TM ASSOCIATES INC.  
1375 Piccard Drive, Suite 150  
Rockville, Maryland 20850  
240.683.0300 (P); 240.428.7636 (F)



1530 FIRST ST. S.W.

PERSPECTIVE VIEW | A-13

1530 FIRST ST. S.W. WASHINGTON DC 20024

Square: 0656 Lot No: 0053 Zone: CG-4



PGN ARCHITECTS, PLLC  
210 7th Street SE - Suite 201  
Washington, DC 20003  
202.822.5995 (P); 202.822.0908 (F)



TM ASSOCIATES INC.  
1375 Piccard Drive, Suite 150  
Rockville, Maryland 20850  
240.683.0300 (P); 240.428.7636 (F)



1530 FIRST ST. S.W.

PERSPECTIVE VIEW | A-14

1530 FIRST ST. S.W. WASHINGTON DC 20024

Square: 0656 Lot No: 0053 Zone: CG-4



PGN ARCHITECTS, PLLC  
210 7th Street SE - Suite 201  
Washington, DC 20003  
202.822.5995 (P); 202.822.0908 (F)



TM ASSOCIATES INC.  
1375 Piccard Drive, Suite 150  
Rockville, Maryland 20850  
240.683.0300 (P); 240.428.7636 (F)



1530 FIRST ST. S.W.

PERSPECTIVE VIEW | A-15

1530 FIRST ST. S.W. WASHINGTON DC 20024

Square: 0656 Lot No: 0053 Zone: CG-4



PGN ARCHITECTS, PLLC  
210 7th Street SE - Suite 201  
Washington, DC 20003  
202.822.5995 (P); 202.822.0908 (F)



TM ASSOCIATES INC.  
1375 Piccard Drive, Suite 150  
Rockville, Maryland 20850  
240.683.0300 (P); 240.428.7636 (F)

10/25/2018





1530 FIRST ST. S.W.

PERSPECTIVE VIEW | A-16

1530 FIRST ST. S.W. WASHINGTON DC 20024

Square: 0656 Lot No: 0053 Zone: CG-4



PGN ARCHITECTS, PLLC  
210 7th Street SE - Suite 201  
Washington, DC 20003  
202.822.5995 (P); 202.822.0908 (F)



TM ASSOCIATES INC.  
1375 Piccard Drive, Suite 150  
Rockville, Maryland 20850  
240.683.0300 (P); 240.428.7636 (F)



1530 FIRST ST. S.W.

1530 FIRST ST. S.W. WASHINGTON DC 20024

Square: 0656 Lot No: 0053 Zone: CG-4



PGN ARCHITECTS, PLLC  
210 7th Street SE - Suite 201  
Washington, DC 20003  
202.822.5995 (P); 202.822.0908 (F)



TM ASSOCIATES INC.  
1375 Piccard Drive, Suite 150  
Rockville, Maryland 20850  
240.683.0300 (P); 240.428.7636 (F)

PERSPECTIVE VIEW | A-17

10/25/2018



1530 FIRST ST. S.W.

1530 FIRST ST. S.W. WASHINGTON DC 20024

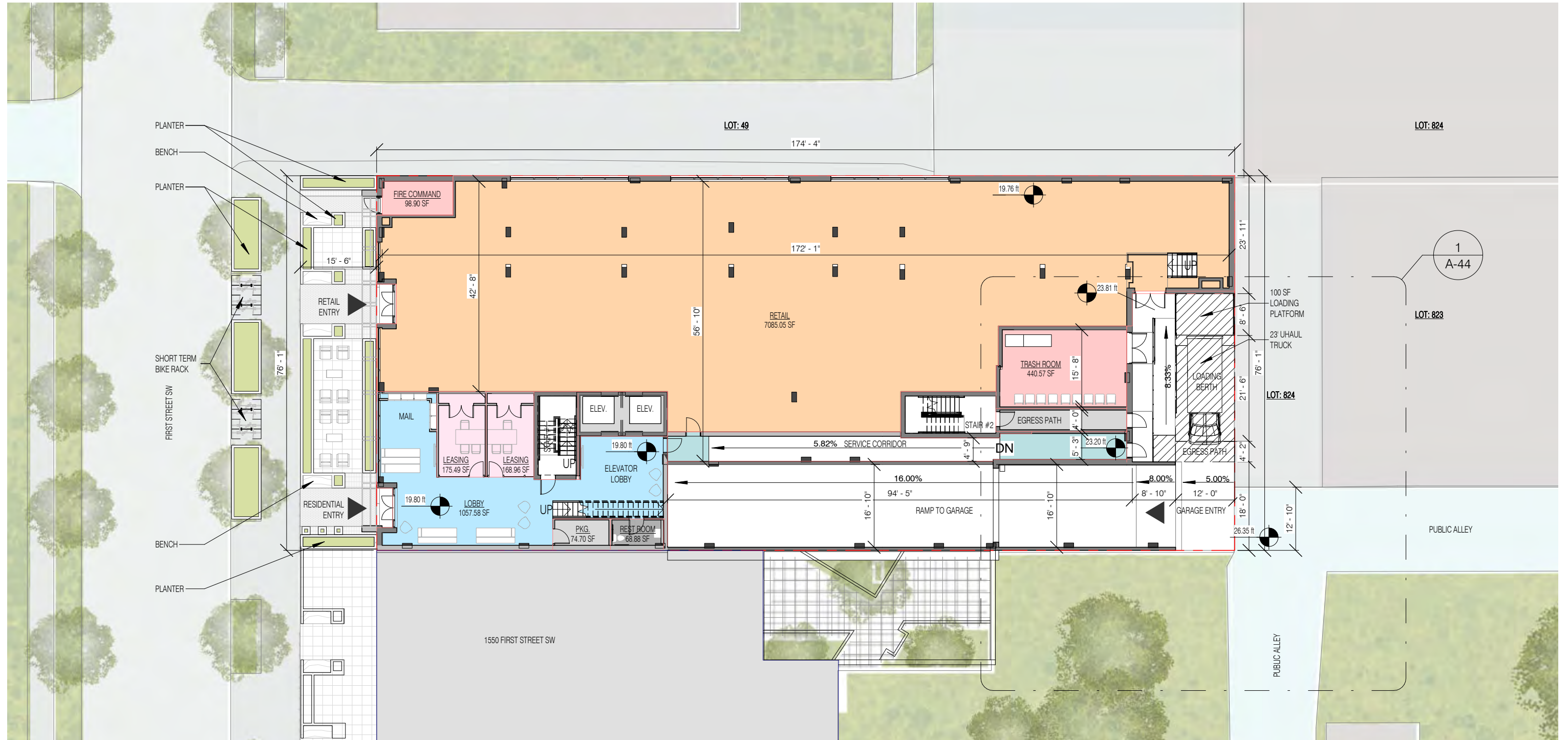
Square: 0656 Lot No: 0053 Zone: CG-4



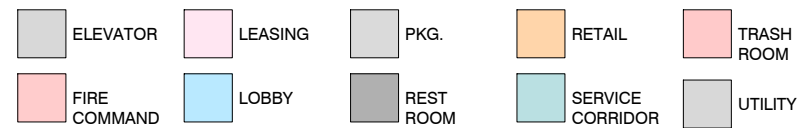
PGN ARCHITECTS, PLLC  
210 7th Street SE - Suite 201  
Washington, DC 20003  
202.822.5995 (P); 202.822.0908 (F)



TM ASSOCIATES INC.  
1375 Piccard Drive, Suite 150  
Rockville, Maryland 20850  
240.683.0300 (P); 240.428.7636 (F)



KEYPLAN



GROSS FLOOR AREA = 11,711 SF  
 LOT OCCUPANCY = 11,711 / 13,265.53 = 88.28 %  
 FAR 7.80



1530 FIRST STREET SW

FIRST FLOOR PLAN A-19

1530 FIRST STREET SW WASHINGTON D.C. 20024

Square: 0656 Lot No: 0053 Zone: CG-4



PGN ARCHITECTS, PLLC  
 210 7th Street SE - Suite 201  
 Washington, DC 20003  
 202.822.5995 (P); 202.822.0908 (F)



1375 Piccard Drive, Suite 150  
 Rockville, Maryland 20850  
 240.683.0300 (P); 240.428.7636 (F)

11/15/2018



- KEYPLAN
- 1BD
  - 2BD
  - 3BD
  - 4BD
  - AMENITY
  - TRASH

GROSS FLOOR AREA = 10,219 SF  
 LOT OCCUPANCY = 10,219 / 13,265.53 = 77.03 %  
 FAR 7.80



# 1530 FIRST STREET SW

## SECOND FLOOR PLAN | A-20

1530 FIRST STREET SW WASHINGTON D.C. 20024

Square: 0656 Lot No: 0053 Zone: CG-4

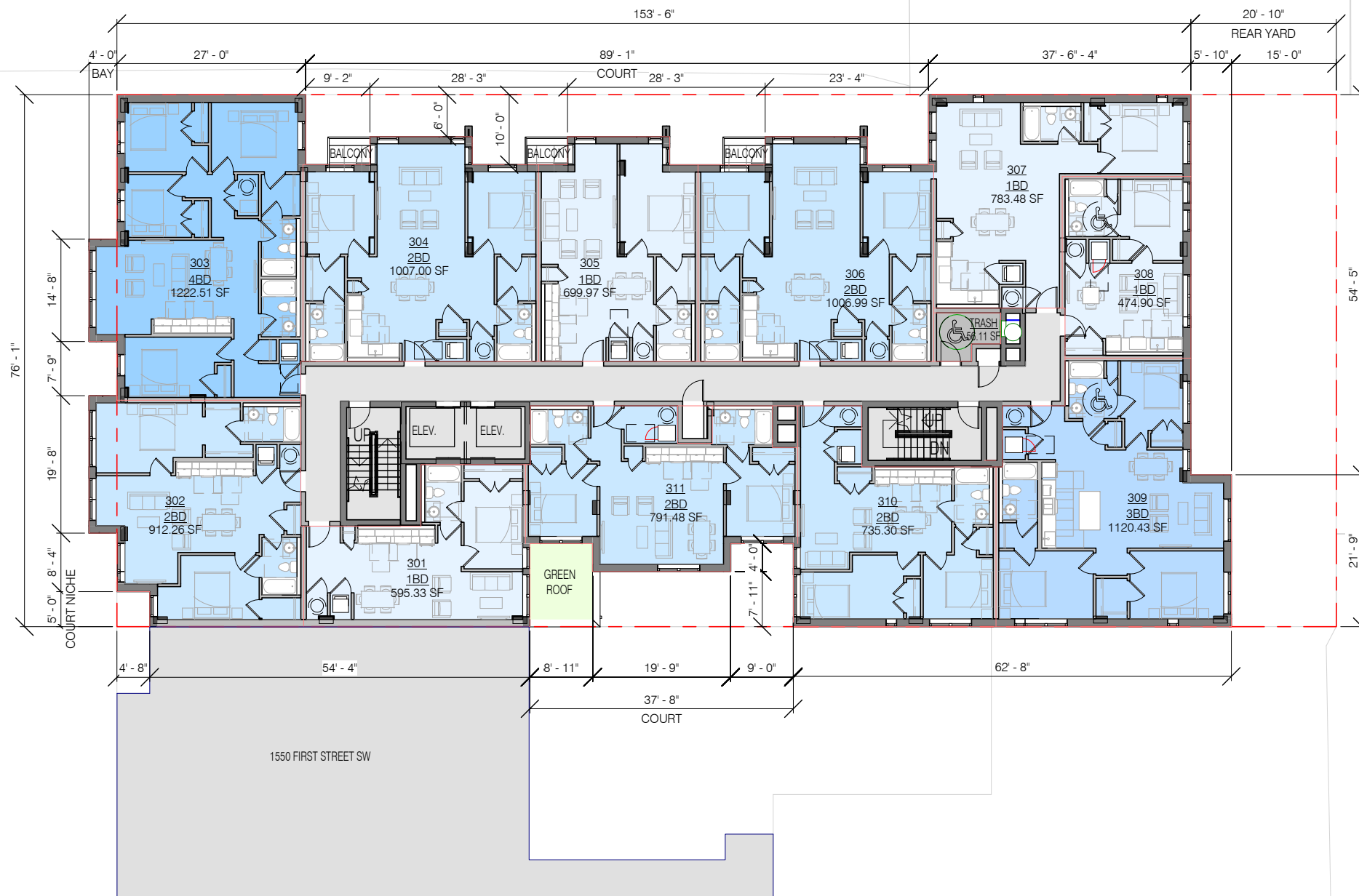


PGN ARCHITECTS, PLLC  
 210 7th Street SE - Suite 201  
 Washington, DC 20003  
 202.822.5995 (P); 202.822.0908 (F)



1375 Piccard Drive, Suite 150  
 Rockville, Maryland 20850  
 240.683.0300 (P); 240.428.7636 (F)

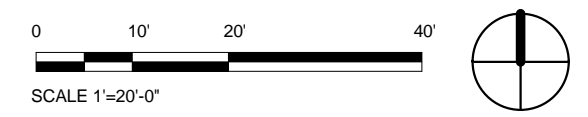
11/15/2018



KEYPLAN

- 1BD
- 2BD
- 3BD
- 4BD
- TRASH

GROSS FLOOR AREA = 10,701 SF  
 LOT OCCUPANCY = 10,701 / 13,265.53 = 80.67 %  
 FAR 7.80



# 1530 FIRST STREET SW

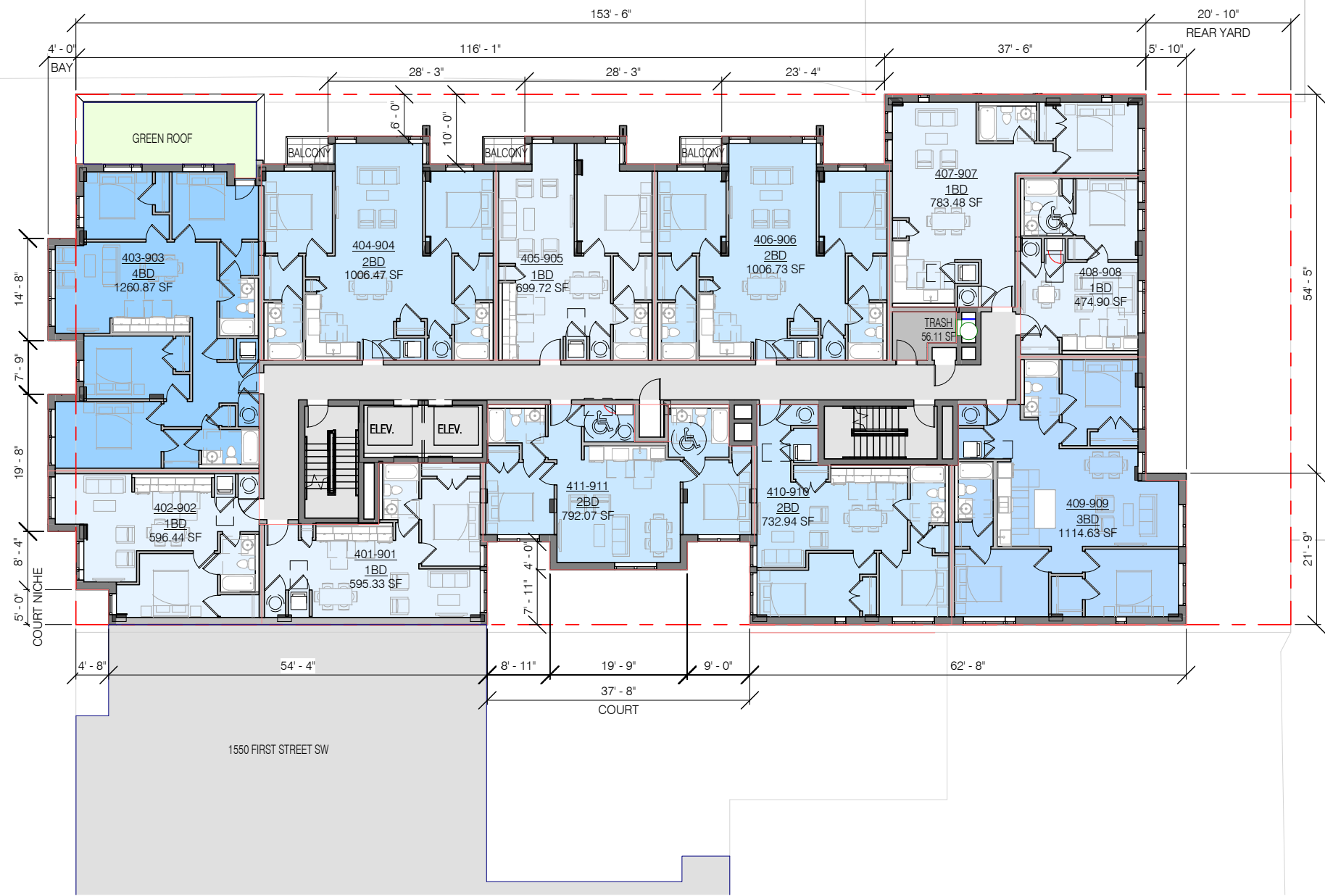
# THIRD FLOOR PLAN | A-21

1530 FIRST STREET SW WASHINGTON D.C. 20024  
 Square: 0656    Lot No: 0053    Zone: CG-4

**PGN ARCHITECTS**  
 PGN ARCHITECTS, PLLC  
 210 7th Street SE - Suite 201  
 Washington, DC 20003  
 202.822.5995 (P); 202.822.0908 (F)

**TM Associates Inc.**  
 1375 Piccard Drive, Suite 150  
 Rockville, Maryland 20850  
 240.683.0300 (P); 240.428.7636 (F)

11/15/2018



- KEYPLAN
- 1BD
  - 2BD
  - 3BD
  - 4BD
  - TRASH

GROSS FLOOR AREA = 10,425 SF  
 LOT OCCUPANCY = 10,425 / 13,265.53 = 78.59 %  
 FAR 7.80



# 1530 FIRST STREET SW

# FOURTH TO NINTH FLOOR PLAN A-22

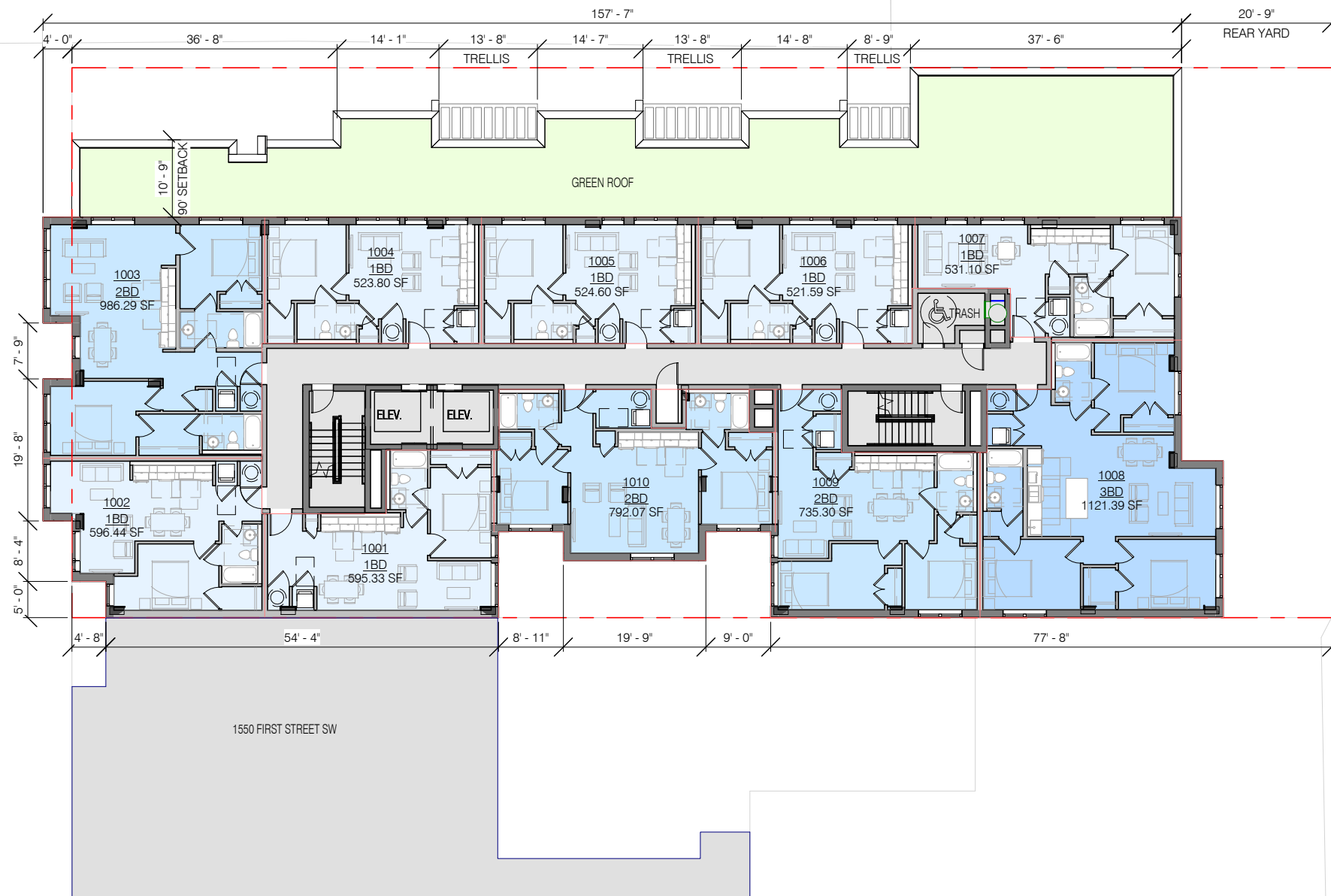
1530 FIRST STREET SW WASHINGTON D.C. 20024  
 Square: 0656 Lot No: 0053 Zone: CG-4

**PGN ARCHITECTS**  
 PGN ARCHITECTS, PLLC  
 210 7th Street SE - Suite 201  
 Washington, DC 20003  
 202.822.5995 (P); 202.822.0908 (F)

**TM Associates Inc.**

1375 Piccard Drive, Suite 150  
 Rockville, Maryland 20850  
 240.683.0300 (P); 240.428.7636 (F)

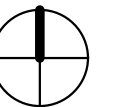
11/15/2018



KEYPLAN

- 1BD
- 2BD
- 3BD

GROSS FLOOR AREA = 8,244 SF  
 LOT OCCUPANCY = 8,244 / 13,265.53 = 62.15 %  
 FAR 7.80



1530 FIRST STREET SW

1530 FIRST STREET SW WASHINGTON D.C. 20024

Square: 0656 Lot No: 0053 Zone: CG-4



PGN ARCHITECTS, PLLC  
 210 7th Street SE - Suite 201  
 Washington, DC 20003  
 202.822.5995 (P); 202.822.0908 (F)



1375 Piccard Drive, Suite 150  
 Rockville, Maryland 20850  
 240.683.0300 (P); 240.428.7636 (F)